



Applications

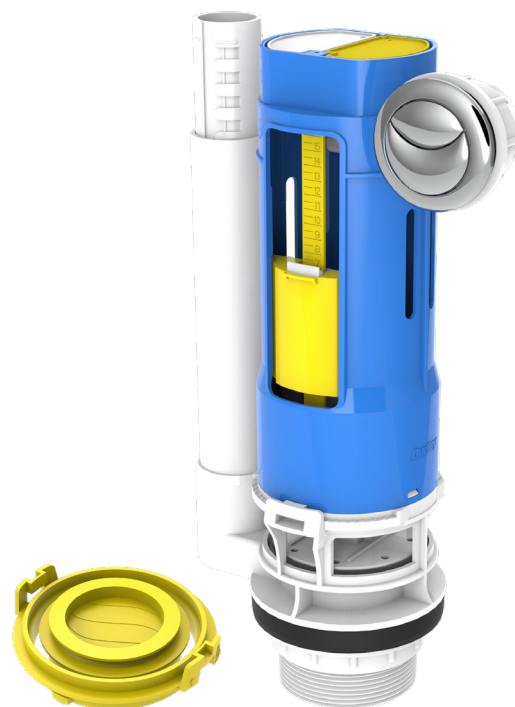
Ideal for use as a replacement in most ceramic or plastic exposed cisterns.

Water Saving

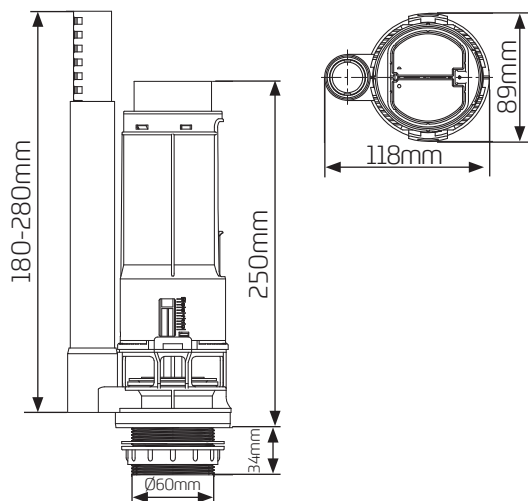
- ~ Water saving full and reduced flush
- ~ 6/4 litre dual flush

Features

- ~ Supplied with a 2" 60mm Outlet
- ~ Attractive chrome plated dual flush push button
- ~ Adjustable internal overflow from 180mm to 280mm
- ~ Bayonet fitting enables valve body to be quickly & easily removed from the cistern
- ~ Long life silicon rubber seal
- ~ Easy adjustment
- ~ WRAS approved
- ~ Now supplied with our NEW Valve Mate - retrofit flush valve adaptor. Designed to allow the Dudley Victoria Outlet Valve to retrofit the Fluidmaster Pro 550 and Wirquin Kayla flush valves.



Dimensional Data



Technical Data

Outlet	2" BSP (60mm)
Flush Volume	6/4 Litre Dual Flush
Compatible Cistern Size	250 - 280mm internal height
Cistern Type	Low Level Exposed and Close Coupled

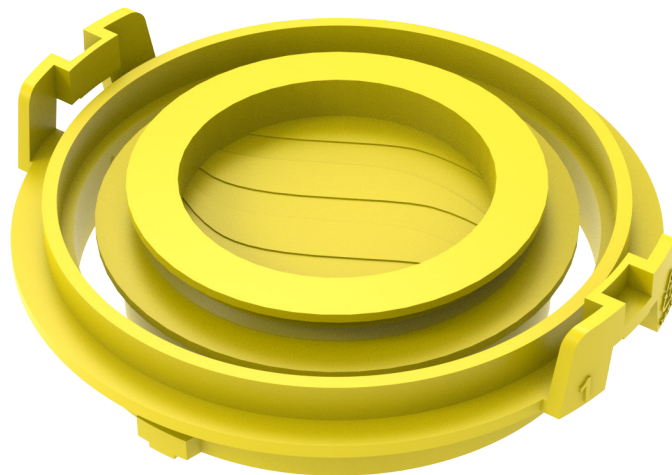


Applications

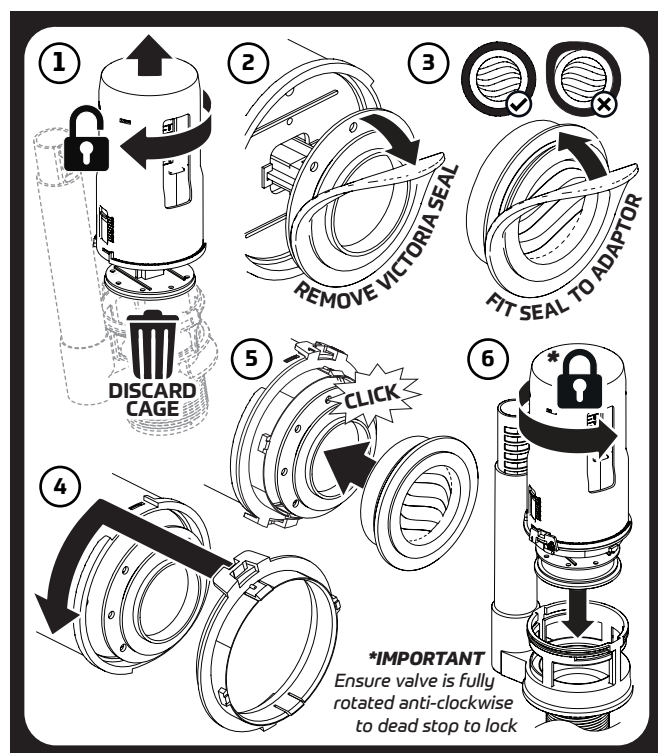
Designed to allow the Dudley Victoria Outlet Valve to retrofit the Fluidmaster Pro 550 and Wirquin Kayla flush valves.

Features

- ~ Works with both cable & mechanical options of the Victoria outlet valve
- ~ Time saving; no need to dismantle
- ~ Quick & easy to retrofit in under 30 seconds
- ~ Inside & outside of cistern assembly
- ~ Supplied prepacked with both versions of the Dudley Victoria Valve



Instructions



Compatibility

Compatible with:

Fluidmaster Pro550 Flush Valve and Wirquin Kayla Flush Valve